

## Important to remember when you search for housing:



### Lease

It is very important to always have a **lease**. The lease must clearly state what **rent** you need to pay, the **term** of the lease, and the **length of the notice** of termination period.

### Have all your papers in order

Be prepared to show documents that prove your **salary**, **employment** or **studies**, as well as a **personbevis**, which is an abstract of your population register entry from the Tax Authority, when your future landlord requests them.



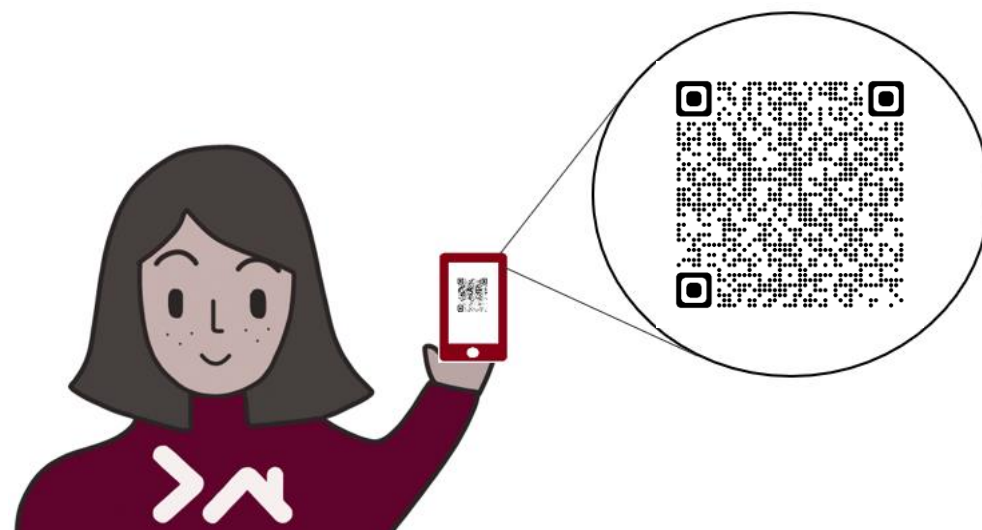
### Be careful!

Never pay rent for an apartment you do not have a lease for. Don't pay any money before you get the keys. Check that the person you want to rent from really has the right to rent out the apartment.

If you feel unsure, ask our personnel. We are happy to help you.

# Vägen till egen bostad

Information and tools you can use to find housing



You are living in SHIS housing while looking for housing on the regular housing market. This means that you need to look for other apartments while you're living here.

We at SHIS can help you by showing you how to look for housing. But it is your responsibility to find housing.

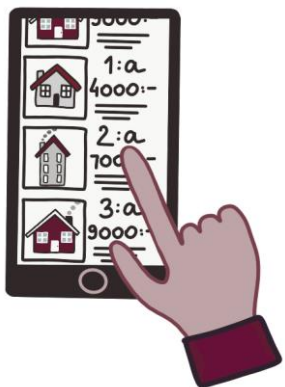
**Begin today! It is important to be active when searching for housing.**

## How do I find an apartment?

The most common way to lease a **rental apartment** is through a **housing queue**.

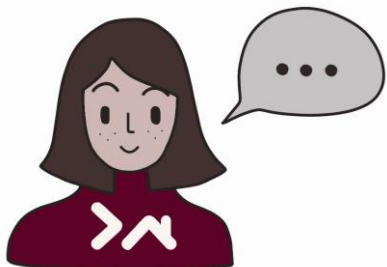
You must be registered in a queue and be actively looking for an apartment.

**It is important to be active, to log on frequently, and register interest in apartments.**



The most common way of finding a **sublet** or a **room** is to search the housing ads on the Internet. There are many sites that have housing ads. Ask our personnel if you want a list of different sites that have housing ads.

**It is important to use your contacts when you are looking for apartments.** Tell your friends, workmates and other people that you are looking for an apartment or a room. Also search the social media. For example, you can write on Facebook that you are looking for an apartment.



SHIS is your **reference** when you look for housing.

Being a **reference** means that a landlord can phone us and ask whether you are a good tenant.



- Have you been paying your rent on time?
- Have there been any complaints about you?
- Have you taken good care of the apartment?

**A good reference is important when you are looking for housing.**

It is very difficult to get a new apartment when you owe rent.

If you have problems with owing rent, you can get help from both the municipality and SHIS. Ask your maintenance personnel (bovärd) if you need to schedule a meeting with our budget and debt advisor.

